

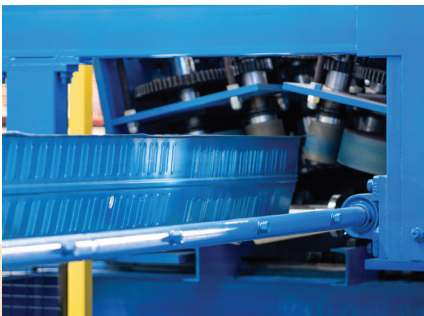
# STRONGFLOOR

**Composite Systems is an innovative manufacturer of sustainable hybrid structural systems, creating unique service offerings to the construction market.**











**COMPOSITE SYSTEMS**

STRENGTH. STABILITY. DURABILITY.



Strongfloor is a Timber Concrete Composite developed and tested by Viridi Group, utilising timber where it performs best. Timber acts in tension at the base of the floor, provides a high quality aesthetic soffit, and acts as permanent formwork to the concrete. Steel channels are fixed in a factory setting in composite action to the mass timber panels providing strength, while concrete is poured over the top to provide a robust and solid finish under foot.

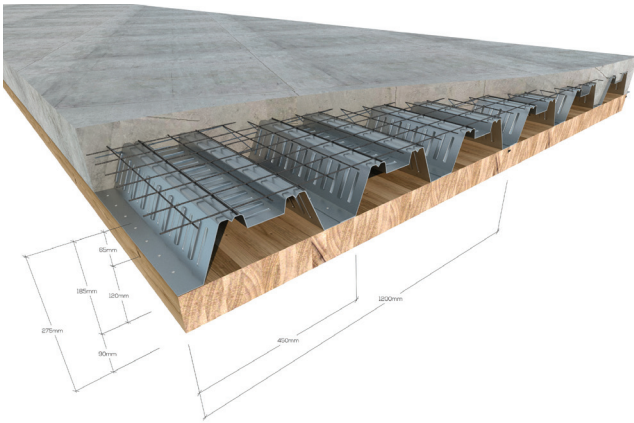
-  **Up to 9 meter spans**
-  **No temporary propping**
-  **Lower embodied Carbon\***
-  **Precision construction tolerance**

-  **Exposed timber soffit**
-  **DTS fire performance**
-  **Independent structural testing**
-  **NCC acoustic compliance**



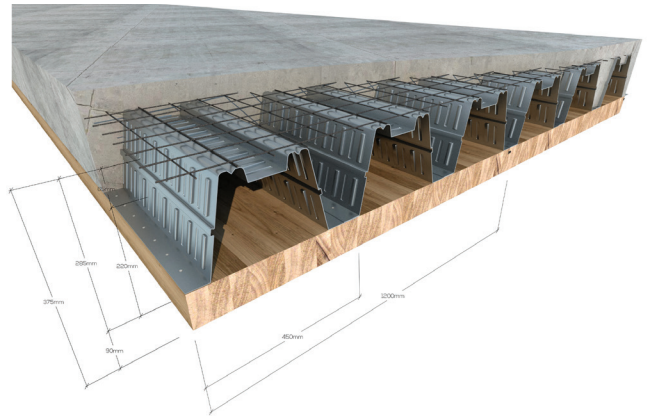
Composite Systems creates unique service offerings to the construction market by adding value through the use of hybrid materials and structural systems. Strongfloor is an Australian produced, high-quality, factory-made product, where the concrete is cast in-situ to bond the factory sections together. The product is a distinct offering to the global construction marketplace, with proven key advantages to building systems, especially when paired with prefabricated timber products.

*\*Compared to reinforced concrete only floors*



### Strongfloor 275

90 glulam (minimum), 120 steel channel, 65mm concrete cover – Total = 275mm



### Strongfloor 375

90 glulam (minimum), 220 steel channel, 65mm concrete cover – Total = 375mm

The floors are made in 1.2m wide modules to suit the manufacturing system and available materials but will typically be joined together into 2.4m wide modules for transport and installation. Available lengths are up to 11.9m, but can be varied.

Viridi have developed a **suit of standard details** that can be used on your project – please speak with a Viridi representative about your individual project needs.



**SCAN the QR code for a link to the Strongfloor Design Guide on the Viridi website.**

This comprehensive Design Guide contains all the technical information you need to specify this product.



# VIRIDI GROUP

“VirIDI Group are inspiring positive change in the building industry, creativity and collaboration, and influencing cultural and environmental awareness, by building communities and enriching people’s lives”